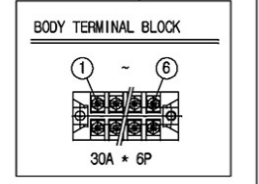
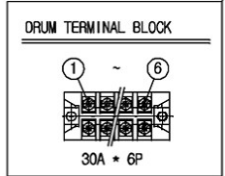
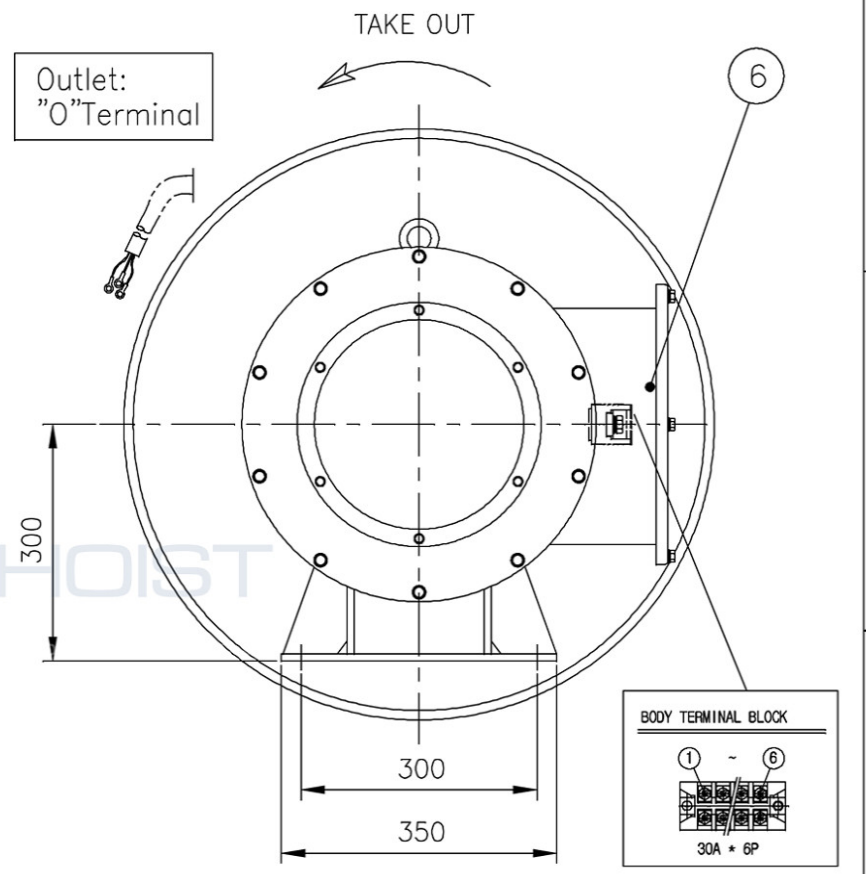
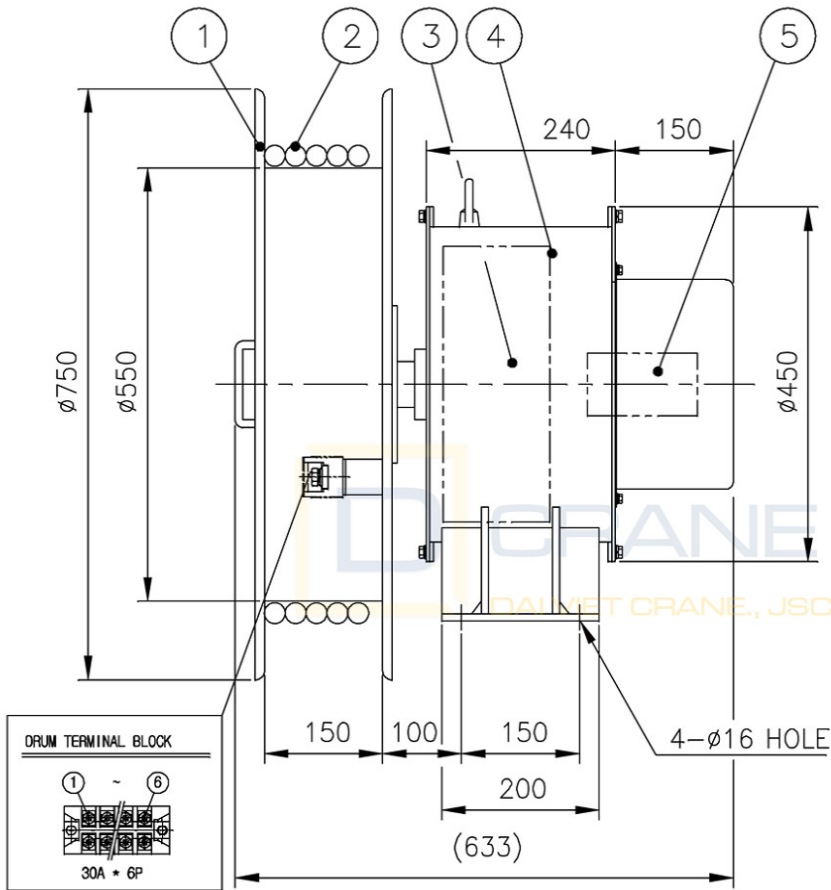
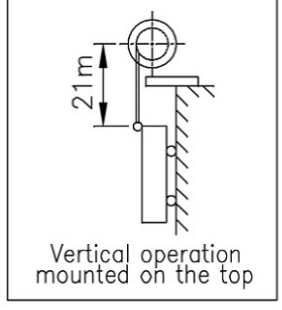
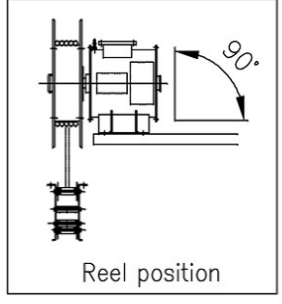
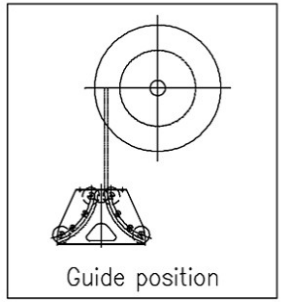
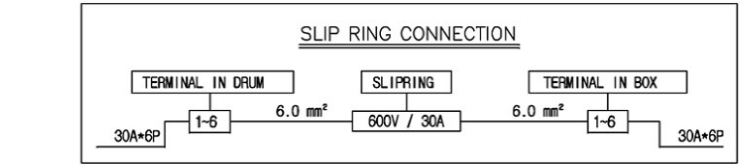


MARK	REVISIONS NO	REASONABLE RVISIONS	DATE	DWN	APVD



SPECIFICATION

- Cable
 - o PNCT 6sq x 6c
 - o Size : approx. $\phi 20.1$ mm
 - o Weight : approx. 0.68 kg/m
 - o Length : 25 M
- Winding Length : 21 M
- Winding Speed : max. 15 M/MIN
- Winding Torque : 6.5 Kg.m



- Slip Ring : 30A x 6P
- Paint Color : MUNSELL No. 7.5 BG6/1.5 (In Door)
- Setting Height : Max. 21.0 m from G.L.

6	TERMINAL BOX	SS41	1	
5	SLIP RING ASS'Y	C3771	6	
4	FRAME ASS'Y	SS41	1	
3	SPRING ASS'Y	SK-5	3	
2	CABLE	PUR.	25M	
1	DRUM ASS'Y	SS41	1	

ITEM	PARTS NO.	PART NAME	MATERIAL	Q'TY	REMARKS
PROJECTION		DIMENSIONS		SCALE	MODEL
3rd ANGLE		METRIC (mm)		1 : 10	ECSV-625-6
CUSTOMER		VNID		PART NAME	
				CABLE REEL	
MODEL COLOR		7.5BG 6/1.5		PART NO.	
				A485-8000	
DRAWING	DESIGN	CHECK	APPROVAL		
SIGN	C.H.S				
DATE	2019.09.23				



A4(210X297)